



**NSW PRIMARY PRINCIPALS'
ASSOCIATION Inc. (NSWPPA)**

INTRODUCTION

AUGUST 2016

The NSW Primary Principals' Association Inc.

– WHAT IS IT?

The NSWPPA, an Incorporated Body within NSW, is:

A professional association for Primary Principals of Public Schools throughout New South Wales and is affiliated with the Australian Primary Principals' Assoc (APPA) and the Australian Government Primary Principals' Assoc (AGPPA). **The NSWPPA Office is situated on the Broadway Campus of the University of Technology Sydney (UTS) – Building 10 Level 5 Rm 5.483. The Executive Officer is available via email, fax or phone.**

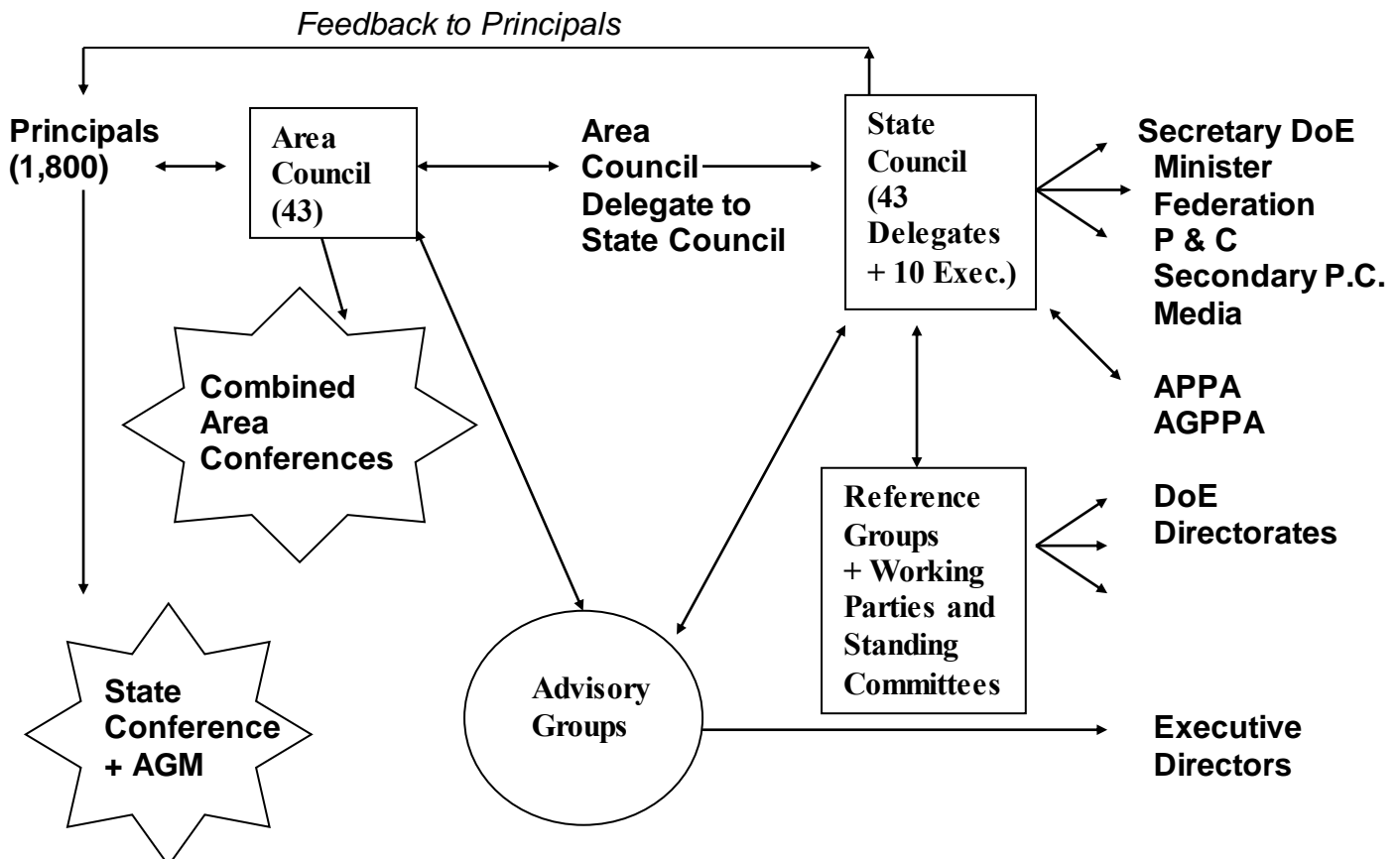
Tel: 02 9514 2299 Fax: 02 9514 1763 Mobile: 0418 623 011 Mail: PO Box 810 Surry Hills NSW 2010

Email: mpritchard@nswppa.org.au

NSWPPA Inc. Provides:

- opportunities for Principals to have issues and concerns raised and some solutions proposed to these areas of concern;
- professional development and enrichment for Principals through meetings, conferences and website links;
- honest and factual advice to the Department of Education (DoE) and Minister for Education about the needs of Primary Schools, SSPs, EECs and Hospital Schools;
- welfare support for all Principals through peer networks at Area Council and Statewide levels when required; and
- an avenue for regular communication and consultation between Primary Principals and the NSW Teachers Federation, Federation of P & Cs, Secondary Principals' Council and other peak educational bodies.

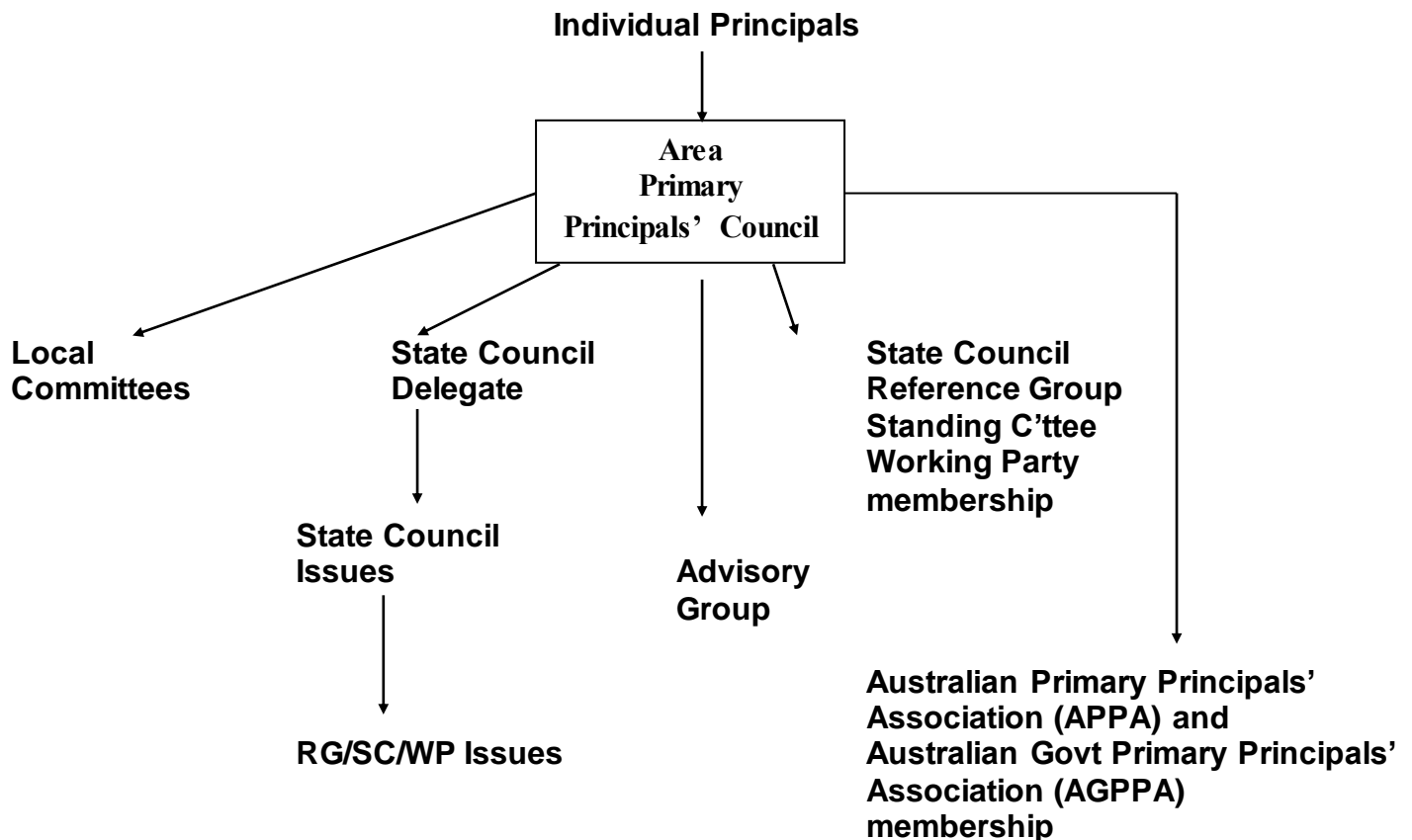
NSWPPA has been instrumental in shaping a better Public School system for Primary students and, through the active involvement of Principals, will continue to do so.



HOW DO AREA COUNCILS WORK?

- Area Primary Principals' Councils are established across NSW.
- Principals become members of their Area Council by paying an annual Membership Fee (preferably by direct salary deduction) and participating in Area Council meetings.
- At these Term meetings, opportunities are given to Principals to raise and discuss issues of importance to them, to participate in the development of Association policy, to provide collective advice to the Director Public Schools NSW, through Advisory Groups to the Executive Director and, when required, through State Council to the Secretary DoE and Minister.
- Area Councils annually elect an Executive leadership team to organise the day-to-day business of the Area Council, to ensure that concerns raised by individual Principals are directed appropriately and to ensure that the collective wisdom of Principals across the Area is accurately represented in other forums.
- Area Councils provide opportunities for professional development and enable Principals to seek support from their colleagues in the area of Principal's welfare.
- Area Councils nominate Principals to participate in local committees such as Student Welfare, Integration, General Assistant and other resource allocations, Professional Development, Merit Selection Panels for Principals' positions, amongst others.

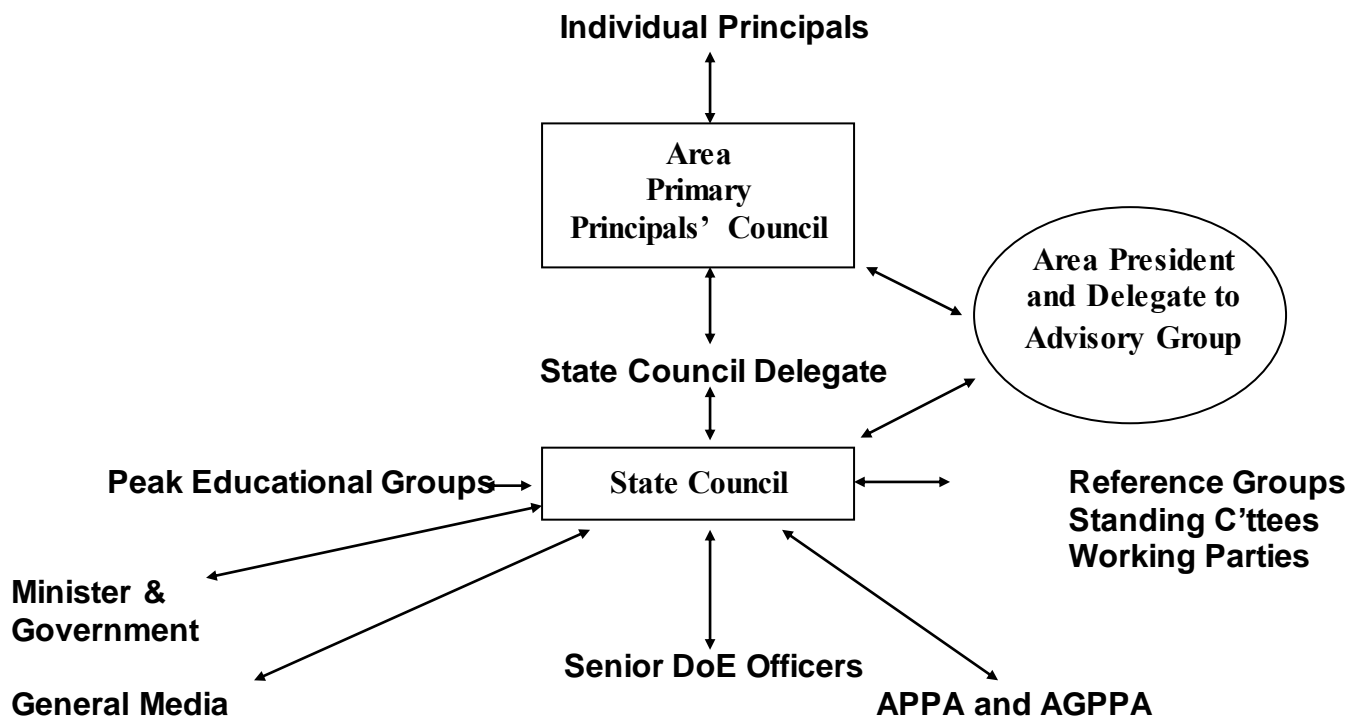
Principals' involvement in their Area Council is critical in enabling the Association to have a strong base from which improvements to Primary Education are built.



HOW DOES STATE COUNCIL WORK?

- State Council comprises 1 Delegate from each Area Primary Principals’ Council (43 Delegates), the Chairperson of each State Council Reference Group/ Standing Committee/Working Party and 10 State Executive Members, as well as an Observer Delegate from EECs, Central Schools and the Retired Principals’ Association.
- State Council meets once per Term for 2 days at the Novotel Sydney Central (formerly Citigate) Hotel in Haymarket, Sydney usually in Week 7, 8 or 9 each Term.
- State Council discusses and debates issues raised by Principals through Area Councils and/or raised by Reference Groups or State Executive.
- State Council is attended by senior officers of the DoE, the Minister and representatives of other peak bodies, for the purpose of discussing current issues.
- State Council appoints Principals to be members of 14 Reference Groups that directly relate to DoE Directors. e.g. Curriculum, Aboriginal Education, Equity, Asset Management, Disability Programs etc
- State Council sets policy directions for the Association that impact on individual Principals and Schools and plays a major role in shaping DoE policy.
- State Council organises an Annual State Conference, open to all Principals who wish to attend (at cost) and for which high quality speakers and workshops are arranged. The Annual General Meeting of the Association is held at State Conference.

State Council plays a major role in caring for and supporting every Principal in the areas of representation, welfare, morale and professional enrichment.



HOW DO REFERENCE GROUPS WORK?

- Each Area Council nominates contact Principals who have expertise and/or interest in the following areas:

Aboriginal Education

Assessment, Planning & Accountability

Asset Management

Curriculum

Disability Programs

Finance & Administration

Human Resources

Learning Innovations

Principals' Support

SSP

Student Welfare

Teaching Principals

Technology

- From these Area Contacts, a Regional Representative is selected, by each Region's Area Council Presidents, to be that Region's member of the NSWPPA State Reference Group.
- Reference Groups meet regularly throughout the year, both face-to-face and by teleconference or video conference.
- Each Reference Group has a Chairperson who arranges meetings between the Reference Group and DoE Directors, for the exchange of ideas for DoE policy development.
- Reference Group Chairpersons meet each term with State Executive.
- Reference Groups take up with DoE Directors, issues raised by individual Principals through Area Councils and State Council, and provide information and replies to individual Principals about the issues raised.
- Reference Groups develop Positions for the Association that reflect the policy adopted by the majority of Primary Principals, in relation to various issues.
- On the NSWPPA website, Principals may read reports of Reference Group activities and download relevant Positions. www.nswppa.org.au

WHAT ARE STANDING COMMITTEES & WORKING PARTIES?

- Standing Committees and Working Parties are comprised of members who have particular expertise and interest in a specific context. Membership is determined by State Executive, generally through advertised Expressions of Interest.

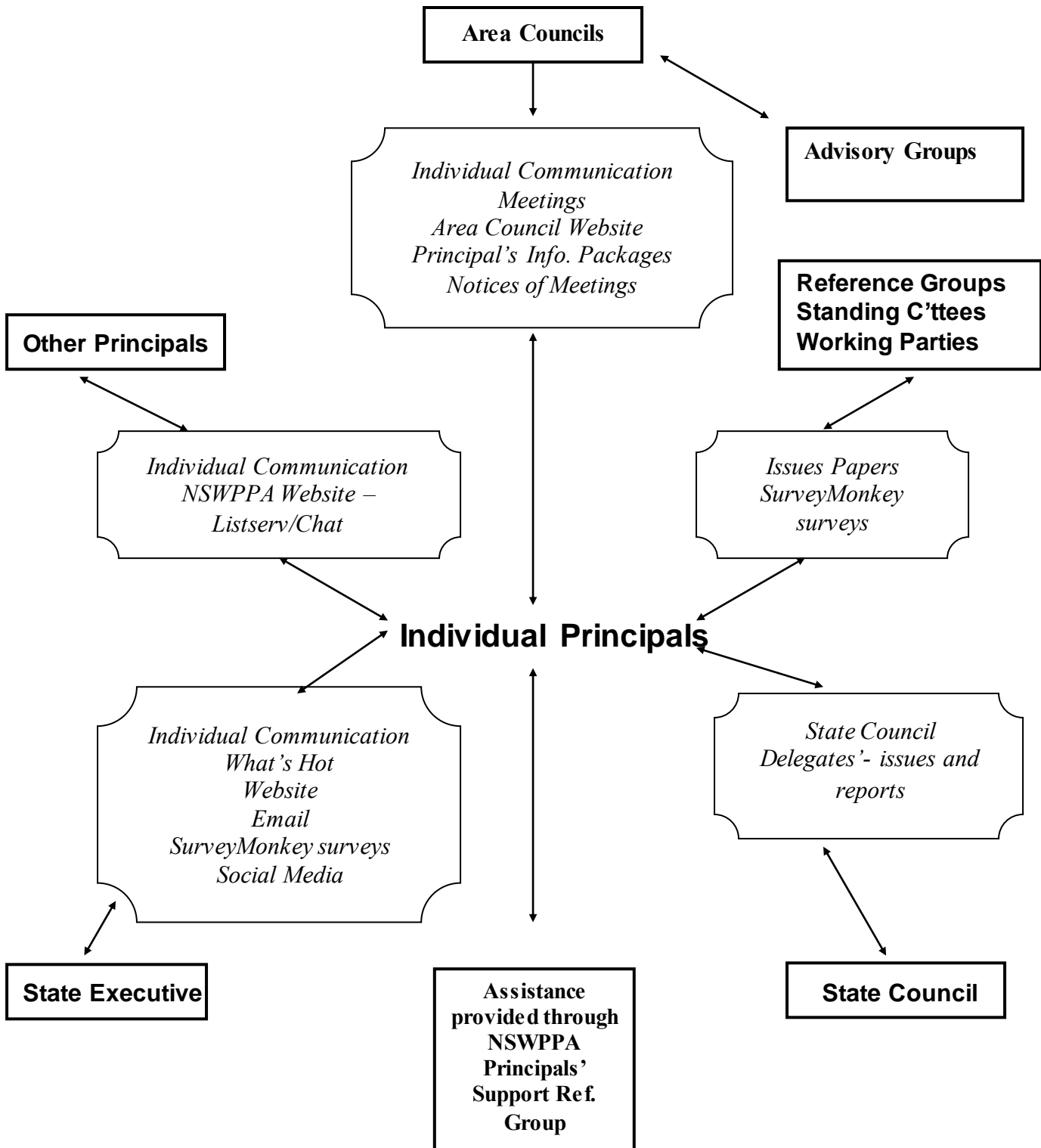
Standing Committees - SC (ongoing representation as required):

Leadership; Rural Education; Legal Issues; Communication & Engagement; Annual Conference; Constitution; Dispute Resolution

Working Parties - WP (specific representation): Educational Provision/School Viability

Reference Groups, Standing Committees and Working Parties are the policy “engine room” of the Association

NSWPPA COMMUNICATION LINKS



Some Communication Strategies

- **What's Hot** (NSWPPA Newsletter) – these are emailed to every Principal on a regular basis to keep all members up to date on emerging matters. Past issues of **'What's Hot'** are available on the NSWPPA website dating back to late 2002. To see the current **'What's Hot'**, visit the NSWPPA website at www.nswppa.org.au and click the **'What's Hot'** link.
- **Survey Monkey Surveys** - Reference Groups, Working Parties, Standing Committees and/or the State Executive may develop Zoomerang Surveys. We endeavour to keep the surveys quite specific and ask all Principals to respond within the designated time frame. The data we gain from these surveys adds significant weight to our positions, policies and submissions put to the DoE and ensures that the work of the Association represents the majority of Principals.
- **NSWPPA Website** www.nswppa.org.au - this is regularly updated by the Association's Website Manager with important information for all members. Access to listserves (PASHN – Principals' Association Self-Help Network; Teaching Principals), user groups, the Principals' Help Desk (PHD) assistance centre and other key sites is via the Members Only section of the website. **Access to the Members Only section is via a User Name and Password – click on the Members Only icon and register your own User Name and Password.**
- **Issues Papers** – Electronic proformas are available from the website to enable all Principals to raise important issues through their Area Councils. Issues raised at Area Council meetings may then be taken up at the Regional Advisory Group meeting or submitted online to the NSWPPA Executive via the NSWPPA Website.

MEMBERSHIP ENTITLEMENTS

Financial Membership of an Area Primary Principals' Council enables Principals to:

- **ensure their voice is heard** in shaping Local, State and National educational policies;
- **participate in an outstanding collegial network** that focuses on peer support for individuals and the elevation of the Principalship in its community standing;
- **attend Area Primary Principals' Council Meetings each Term**, where local issues are discussed;
- **attend Combined Area Conferences** (at cost) where these are organised by local committees;
- **attend the NSWPPA Annual State Conference and AGM** (at cost);
- **be nominated for NSWPPA Awards**, such as the Professional Award, the Social Justice and Equity Award and the Aboriginal Education Award;
- **be affiliated members of the Australian Government Primary Principals' Association (AGPPA);**
- **be affiliated members of the Australian Primary Principals' Association (APPA);**
- **access 'Principals' Australia';**
- **access Professional Development activities** directly relevant to their school leadership role;
- **stand for leadership office** at all levels of Australian Principals' organizations; and
- **share the delights and challenges of the Principalship with enthusiastic, knowledgeable and supportive peers!!!**

Principals, by being active members of their Area Primary Principals' Council, are members of one of the largest and most effective Public Primary School Principals' Associations in the world – the NSWPPA.

ASSOCIATION PRIORITIES

New South Wales Primary Principals' Association Priorities for 2015 – 2017

The New South Wales Primary Principals' Association seeks to support all Primary Principals in New South Wales government schools in making the primary years of schooling a rich, well-resourced platform for student success – an investment in the future of our state and our nation. The Priority Areas of the NSWPPA 2015-2017 reflect the clear mandate from 1 800 Primary Principals from across New South Wales for all students in public school settings.

Priority 1: The Principal in a Changing Environment

Increased Accountability
Leadership Development
Principal Support
School Planning
Quality Teaching Successful Students
Local Schools Local Decisions
Resource Allocation Model

Priority 2: Learning and Quality Teaching

Curriculum Implementation
Professional Learning
Gonski Funding
Catering for specific settings and purposes
Accreditation and Great Teaching Inspired Learning
Transition P-K and 6-7
Quality Teaching Successful Students

Priority 3: Communication

Primary Principals' Association and Principals' Councils
State Executive
Department of Education
Public Education
Senior Department of Education personnel

Priority 4: School Operations

Funding
Innovative Pedagogical Practices
Principal Classification
Viability
Student Services
Staffing
Assets

We will also continue to work as a key member of the **NSW Futures Alliance** and ensure this partnership between the NSWPPA, NSWSPC and the DoE works well, even in times of tension or impending disagreement.

The State Executive will continue to monitor the progress of the Federal Government's **Schools Funding Policy (Gonski)** and work as a key member of AGPPA and APPA at National level to promote the Association's position with all political parties.

In addition to our major priorities, we will continue to deal with ongoing and emerging issues as they arise including:

- ***Principals' Professional Learning***
- ***Succession planning for school leadership***
- ***Principal welfare and workload***

CONSTITUTION & MEMBERSHIP

Each member may access a copy of the Constitution of the NSWPPA Inc. from the Association website on www.nswppa.org.au

A Membership Badge will be presented to new members at their first Area Council Meeting, by the Area Council President.

CALENDAR

The NSWPPA Calendar for 2016 and a pro-forma blank version in Word are available on the NSWPPA website www.nswppa.org.au

EXAMPLE OF A YEAR'S MEETING / TELECONFERENCE SCHEDULE

Week 2 or 3 each Term	Area Council Introductory Meeting (as required)
Week 4 or 5 each Term	Reference Groups/Standing Committees/Working Parties Meetings
Week 7 or 8 each Term	NSWPPA State Council Meeting
Week 8, 9 or 10 each Term	Area Council Meetings
Week 3, Term 4	State Conference and Annual General Meeting of the NSWPPA

NSWPPA MEMORANDUM OF UNDERSTANDING WITH THE DEPARTMENT OF EDUCATION & COMMUNITIES

The NSWPPA has a Memorandum of Understanding with the NSW Department of Education. This Memorandum states that the Association is the peak advisory body to the Secretary DoE on Primary Education. NSWPPA meetings are organised to deal with the business of the Association and may be held during school hours or, in some cases, outside of school hours.

N.B. An amount equivalent to 4 Relief Days per year for each PP5 / PP6, for attendance at Principals' Council Meetings, is included in those schools' global funds. This acknowledges the importance of Principals' Council Meetings and the DoE Secretary's strong focus on Principals being involved at the Area level and endorses the legitimate re-direction of funds for the attendance of all Principals at their Area Council Meetings.

AREA COUNCIL PRESIDENTS AUGUST 2016

Ms Vicki Harris	Albury Public School	Albury
Mrs Denise Smoother	Ben Lomond Public School	Armidale
Mrs Louise Challis	Chullora Public School	Bankstown
Mr Peter Johnson	Moruya Public School	Batemans Bay
Mr Lance Cooper	Kelso Public School	Bathurst
Mrs Tracy Anderson	Sherwood Ridge P School	Blacktown
Mr Craig Nielsen	Crown Street Public School	Bondi
Mrs Angela Lewis	Girilambone Public School	Bourke
Mr Michael Fisher	Broken Hill Public School	Broken Hill
Ms Anna Butler	Campbelltown Public School	Campbelltown
Mr Michael Burgess	Terrigal Public School	Central Coast
Mr Mark Peterson	Moama Public School	Deniliquin
Mrs Anne van Dartel	Buninyong Public School	Dubbo
Mr John Goh	Merrylands East Public School	Fairfield
Mr Ian Adamson	Newington Public School	Granville
Mr Andrew Pryor	Griffith East Public School	Griffith
Mr Gary Condon	Oakville Public School	Hawkesbury
Mr Peter Robinson	Baulkham Hills North Public School	Hornsby
Mrs Lee-Ann Saurins	Wiripaang Public School	Lake Macquarie
Ms Mary-Jane Pell	Nimbin Central School	Lismore
Mr Jason King	Cecial Hills Public School	Liverpool
Mr Stuart Wylie	Tanilba Bay Public School	Maitland
Ms Sue Mackay	Kororo Public School	Mid North Coast
Mr Adrian King	Moree Public School	Moree
Mr Michael Kelly	Mt. Druitt Public School	Mount Druitt Minchinbury
Mrs Jan Partridge	Lambton Public School	Newcastle
Mrs Louise Green	Artarmon Public School	Northern Beaches
Mr Andrew Hooper	Grenfell Public School	Orange Lachlan
Mr Craig Brown	Toongabbie Public School	Parramatta
Ms Norma Petrocco	Kingswood Public School	Penrith Blue Mountains
Mr Daniel Hurd	Camdenville Public School	Port Jackson
Mr David Munday	Aldavilla Public School	Port Macquarie
Mrs Narelle Lloyd	Goulburn Public School	Queanbeyan
Mrs Jenni Cope	Meadowbank Public School	Ryde
Mr Gregory Wells	Flinders Public School	Shellharbour
Mr Michael Laing	Blakehurst Public School	St George
Mr Jason Ezzy	Wooloware Public School	Sutherland
Mr Jeremy Mills	Tamworth South P School	Tamworth
Mr Nigel Sherrard	Tinonee Public School	Taree
Mr Les Daley	Murwillumbah Public School	Tweed Heads Ballina
Mrs Narelle Hunt	Nulkaba Public School	Upper Hunter
Mr Michael Woolbank	Turvey Park Public School	Wagga Wagga
Mr Peter Holmes	Mount Ousley Public School	Wollongong

CURRENT REFERENCE GROUPS AUGUST 2016 (Chairperson)

Aboriginal Education	– Jane Cameron (Glenroi Heights PS)
Asset Management	– Brent Kunkler (Chester Hill PS)
Curriculum (incl. Early Childhood)	– Norma Petrocco (R) (Kingswood PS)
Disability Programs	– Graeme McLeod (Gosford East PS)
Assessment Planning & Accountability	– Bob Willetts (Berry PS)
Finance & Administration	– Karen Mortimer (Strathfield South PS)
Human Resources	– Sue Estens (Hamilton South PS)
Learning Innovations (Futures)	– Paul Petersen (Austinmer PS)
Principals' Support	– Ian Power (Brighton-Le-Sands PS)
Schools for Specific Purposes (SSP)	– Diane Robertson (Clarke Road School)
Student Welfare	– Helen Craigie (Bexhill PS)
Teaching Principals	- Bek Zadow (Rydalmere PS)
Technology	– Mark Greentree (Prestons PS)

CURRENT STANDING COMMITTEES & WORKING PARTIES 2016 (Chairperson)

Annual Conference SC	– Kylie Donovan (Hoxton Park Public School)
Constitution SC	– Geoff Scott (NSWPPA President)
Dispute Resolution SC	– Geoff Scott (NSWPPA President)
Legal Issues SC	– Greg McLaren (Normanhurst West PS)
Communication & Engagement SC	– David Munday (Aldavilla PS)
Leadership SC	– Lyn Davis (Umina PS)
Rural Education SC	– Chisholm Bloch (Morgan Street PS)
Ed. Provision/School Viability WP	- Grant Schaefer (Lakelands PS)

STATE EXECUTIVE TEAM – AUGUST 2016

President NSWPPA Office:	Geoff Scott Building 10 Level 5 Rm 5.483 UTS Broadway Campus	Deputy President School:	Phil Seymour Hayes Park PS
Phone:	02 9514 2299	Phone:	02 4261 4222
Fax:	02 9514 1763	Fax:	02 4262 2043
Mobile:	0427 451 359	Mobile:	0412 673 378
Email:	gscott@nswppa.org.au	Email:	pseymour@nswppa.org.au
Vice President School:	Jackie Malecki Rooty Hill PS	Vice President School:	Mark Hagan Greenway Park PS
Phone:	02 9625 8807	Phone:	02 8783 0859
Fax:	02 9832 1561	Fax:	02 8783 0852
Mobile:	0414 405 614	Mobile:	0429 988 434
Email:	jmalecki@nswppa.org.au	Email:	mhagan@nswppa.org.au
Vice President School:	Terry Fisher Hampden Park PS	Vice President School:	Robyn Evans Bangor PS
Phone:	02 9750 4111	Phone:	02 9543 2244
Fax:	02 9740 5153	Fax:	02 9543 4506
Mobile:	0427 272 844	Mobile:	0409 988 446
Email:	tfisher@nswppa.org.au	Email:	revans@nswppa.org.au
Vice President School:	Ian Reeson Tweed Heads South PS	Vice President School:	Matt Hobbs Armidale City PS
Phone:	07 5524 3408	Phone:	02 6772 3420
Fax:	07 5524 3466	Fax:	02 6771 2262
Mobile:	0400 567 421	Mobile:	0499 521 841
Email:	ireeson@nswppa.org.au	Email:	mhobbs@nswppa.org.au
Secretary School:	Andrew Stevenson Lindfield East PS	Treasurer School:	Rob Walker Evans River K-12 S
Phone:	02 9416 1955	Phone:	02 6682 6666
Fax:	02 9416 2836	Fax:	02 6682 6777
Mobile:	0457 530 793	Mobile:	0419 822 502
Email:	astevenson@nswppa.org.au	Email:	rwalker@nswppa.org.au
Executive Officer Phone: (BH 9.30am – 3.30pm):	Mark Pritchard 02 9514 2299	NSWPPA Office Building 10 Level 5	
Fax: (BH 9.30am – 3.30pm):	02 9514 1763	Rm 5.483 UTS Broadway Campus	
Mobile:	0418 623 011	P.O. Box 810 Surry Hills NSW 2010	
Email:	mpritchard@nswppa.org.au	Contact Mobile: 0427 451 359	
Website Manager Andrew Stevenson	Contact as Secretary	(BH: 9.30 am – 3.30 pm Wed – Fri School Terms)	
		Tel. (BH 9.30am – 3.30pm):	02 9514 2299
		Fax (BH 9.30am – 3.30pm):	02 9514 1763
		Website:	www.nswppa.org.au

August 2016